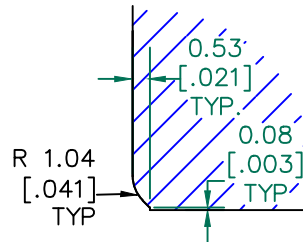


SEE
DETAIL "A"

SECTION A-A

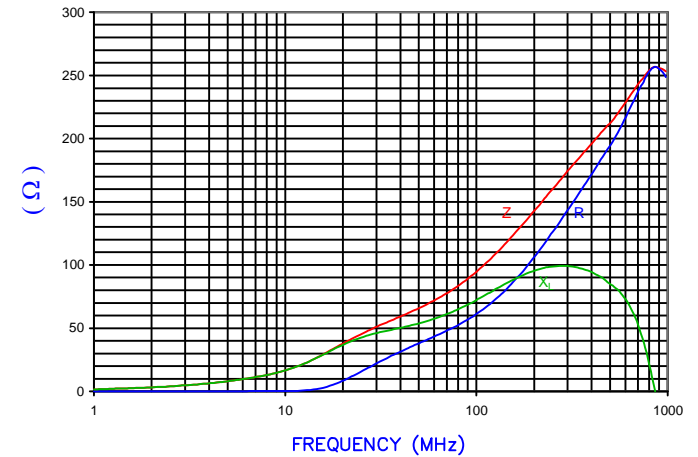


DETAIL "A"
CHAMFER
SCALE=5:1

RoHS

NET IMPEDANCE (Z)			
Frequency	300 MHz	500 MHz	1 GHz
Nominal (REF)	175 Ω	210 Ω	250 Ω
Minimum	- Ω	168 Ω	- Ω

NET Z,R AND X vs. FREQUENCY
(REF. ONLY)



AGILENT E4991A Impedance/Material Analyzer
HP 16092A-Test Fixture

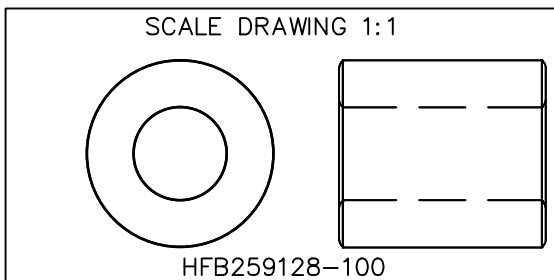
FERRITE CORE DIMENSIONS (SPEC) MM [Inches]:

A	25.91 [1.020]	± 0.46 [.018]
B	12.83 [.505]	± 0.25 [.010]
C	28.58 [1.125]	± 0.57 [.023]

WEIGHT/1000 56.05 kgs [123.56 Lbs]

NOTES: UNLESS OTHERWISE SPECIFIED

1. COSMETIC SPECIFICATION REFER TO WI-QA-038.



DIMENSIONS ARE IN mm [INCHES].				This print is the property of Laird Tech. and is loaned in confidence subject to return upon request and with the understanding that no copies shall be made without the written consent of Laird Tech. All rights to design or invention are reserved.		Laird	
PROJECT/PART NUMBER:				REV	PART TYPE:	DRAWN BY:	
HFB259128-100				C	FERRITE CORE	JRK	
DATE:		03/31/03		SCALE:		1.5:1	
CAD #		HFB259128-100-C		TOOL #		B1020	
MATERIAL:		HF					
REV	DESCRIPTION	DATE	INT				
C	UPDATE LOGO	08/29/16	QIU				
B	UPDATE COMPANY LOGO	06/11/10	JUN				
A	ORIGINAL DRAFT	03/31/03	JRK				