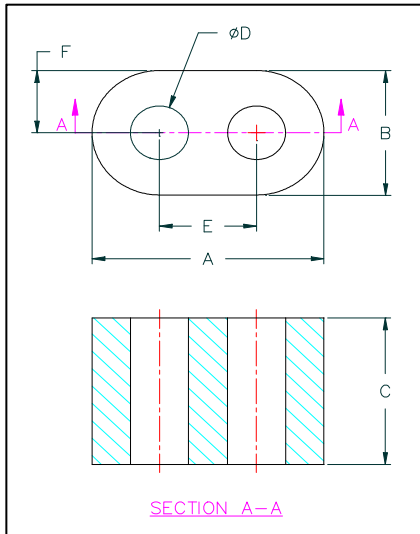


Steward



CORE DIMENSIONS					
UNCOATED CORE				35N0136-10P	
	MM	INCHES		MM	INCHES
A	3.45	(.136)	±	.13	(.005)
B	2.01	(.079)	±	.15	(.006)
C	1.50	(.059)	±	.25	(.010)
D	0.86	(.034)	±	.13	(.005)
E	1.45	(.057)	±	.13	(.005)
F	1.02	(.040)	±	.13	(.005)
SINGLE PARYLENE COATING				35N0136-10P	
A	3.48	(.137)	±	.13	(.005)
B	2.03	(.080)	±	.15	(.006)
C	1.52	(.060)	±	.25	(.010)
D	0.84	(.033)	±	.13	(.005)
E	1.45	(.057)	±	.13	(.005)
F	1.04	(.041)	±	.13	(.005)

INITIAL PERMEABILITY **5000** WEIGHT / K 0.036 KGS 0.08 LBS

ELECTRICAL SPECIFICATION								
	MIN (μH)	MIN TOL.	NOM (μH)	MAX (μH)	MAX TOL.	FREQ. (kHz)	VOLT. (V)	URNS
L	1.41	(-25%)	1.88	2.65	(+25%)	100	≤.0003	1
Q Ref.	REF	-	-	-	-	100	≤.0003	1

COATING SPECIFICATIONS			
TYPE	Max. Coating (mm / mils.)	Min. DLB VAC	TEST FORCE (LB)
PARYLENE	(0.0127 / 0.5)	1000	0.10

- NOTES: Unless otherwise specified
 *1. Testing is through two holes.
 2. *On = Parylene Coating [.00025 TH]



Rev	Description	Date	INT
A	Original Draft	1997-5-14	BAC
B	Update print format, remove coating specs, modify notes.	2001-11-9	JRK
C	Add single coating specs	2001-12-5	JRK
D	Revised Template, Reactivated Print, Added RoHS	2006-7-20	WMM
E	Reactive The Print.	2007-5-8	Dxu

Date: 05/08/2007	DWG # 35N0136-10P-E	Rev: E
Drawn By: Dxu	Title # 35N0136-10P	

Steward This document contains information which is proprietary to Steward. No production or publication of this document in whole or in part shall be made without written authorization from Steward.

UNCONTROLLED DOCUMENT