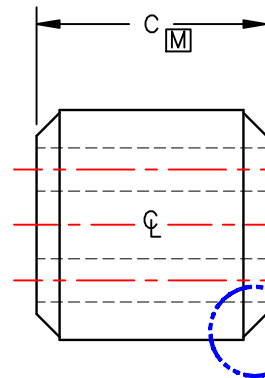
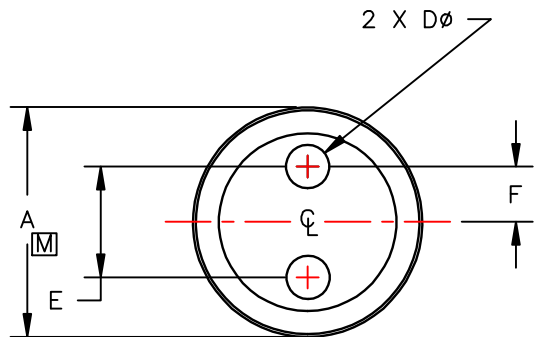


SCALE DRAWING 1:1



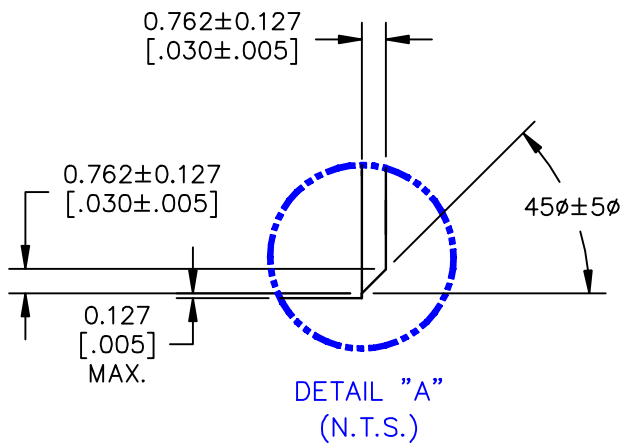
35B0252-000



DETAIL "A"

ELECTRICAL TESTING

TEST:	L	Z	Rs
# TURNS	1	1	1
AWG	22	22	22
FREQUENCY	100 KHz	10 MHz	1 MHz
NOMINAL	- $\mu$ H	- $\Omega$	- $\Omega$
MINIMUM	9.905 $\mu$ H @ 25 mV	105 $\Omega$	35 $\Omega$
MAXIMUM	- $\mu$ H	- $\Omega$	- $\Omega$
WEIGHT/K	2 #		



DETAIL "A"  
(N.T.S.)

**UNCONTROLLED DOCUMENT**

NOTES: UNLESS OTHERWISE SPECIFIED

1.  $\boxed{M}$  DENOTES MAJOR PARAMETER PER SDI QUALITY ASSURANCE MANUAL.—THE Cpk VALUE EXPECTED IS 1.33 OR GREATER.

CORE DIMENSIONS:

A	6.35 [.250]	±	0.13 [.005]
C	6.35 [.250]	±	0.15 [.006]
D	1.19 [.047]	±	0.08 [.003]
E	3.06 [.1205]	±	0.05 [.002]
F	1.53 [.0602]	±	0.05 [.002]

DIMENSIONS ARE IN mm [INCHES].				THIS DOCUMENT CONTAINS INFORMATION WHICH IS PROPRIETARY AND CONFIDENTIAL TO STEWARD. NO PRODUCTION OR PUBLICATION OF THIS DOCUMENT IN WHOLE OR IN PART SHALL BE MADE WITHOUT WRITTEN AUTHORIZATION FROM STEWARD.			
K	CHANGE C DIM TOLERANCE TO 0.15 [.006] TO MATCH CUSTOMER PRINT UPDATE L SPEC AND NOTE 1	06/15/05	TMB	<h1>Steward</h1>			
J	UPDATE PRINT FORMAT FOR ELECTRONIC DATABASE. REVISE NOTES, TOLERANCES ON DETAIL "A" PER CUSTOMER PRINT	02/22/01	TMB				
I	MODIFIED NOTES & ELECT SPEC	10/02/95	JBE	PROJECT/PART NUMBER:	REV	PART TYPE:	DRAWN BY:
H	CHANGED COVER SHEET	06/08/94	JAZ	35B0252-000	K	BALUN CORE	JAZ
G	MODIFIED NOTES	05/26/94	JAZ	DATE:	SCALE:	MATERIAL:	
F	MADE OFFICIAL PRINT	01/19/93	JAZ	05/06/94	5 : 1		
REV	DESCRIPTION	DATE	INT	CAD #	TOOL #		
				35B0252-000-K	B0252	STEWARD	35