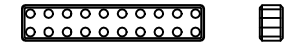
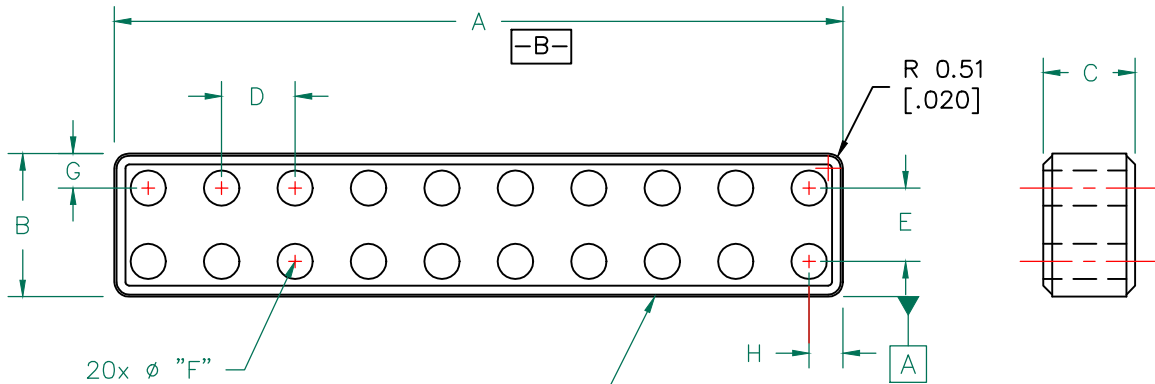


SCALE DRAWING 1:1



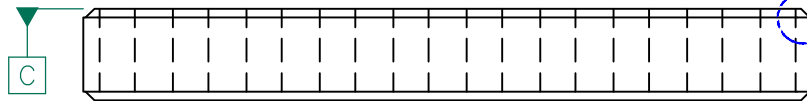
29D0992-000

RoHS



0.20 [0.008]

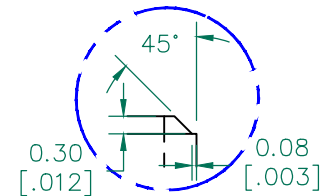
SEE DETAIL "A"



// 0.20 [0.008] C

ELECTRICAL TESTING

TEST:	Z	Z
# TURNS	1	1
AWG	-	-
FREQUENCY	25 MHz	100 MHz
NOMINAL	20 Ω	34 Ω
MINIMUM	-	26 Ω
* MAXIMUM	-	43 Ω
WEIGHT/1000	1.59 Kgs.	3.5 Lbs.



DETAIL "A"

UNCONTROLLED DOCUMENT

NOTES: UNLESS OTHERWISE SPECIFIED

- * 1. FOR INTERNAL REFERENCE ONLY.
- 2. COSMETIC SPECIFICATION REFER TO WI-QA-038.

DIMENSIONS

A	25.2 [0.992]	±	0.38 [0.015]
B	4.95 [0.195]	±	0.08 [0.003]
C	3.18 [0.125]	±	0.08 [0.003]
D	2.54 [0.100]	±	0.08 [0.003]
E	2.54 [0.100]	±	0.08 [0.003]
F	1.22 [0.048]	±	0.05 [0.002]
G	1.19 [0.047]	±	TYP.
H	1.17 [0.046]	±	TYP.

DIMENSIONS ARE IN mm (INCHES).				This print is the property of Laird Tech. and is loaned in confidence subject to return upon request and with the understanding that no copies shall be made without the written consent of Laird Tech. All rights to design or invention are reserved.		Laird		
F	UPDATE COMPANY LOGO	01/07/13	QIU	PROJECT/PART NUMBER: 29D0992-000		REV	F	DRAWN BY: DTR
E	ADD MAX Z SPEC AND NOTE ADD KGS TO WGT	12/02/04	JRK					
D	ADD CHAMFER AND RADIUS TO PART	04/12/02	JRK	DATE: 04/28/98		SCALE: 4 : 1		MATERIAL: FERRITE
C	UPDATE PRINT FORMAT	02/01/02	JRK			CAD # 29D0992-000-F		TOOL # D0992
B	CORRECT WGT & # OF HOLES REMOVED HOLE PLACEMENT TOLS.	05/11/98	BAC	DATE: 04/28/98		SCALE: 4 : 1		MATERIAL: FERRITE
A	ORIGINAL DRAFT	04/28/98	DTR	DATE: 04/28/98		SCALE: 4 : 1		MATERIAL: FERRITE
REV	DESCRIPTION	DATE	INT	DATE: 04/28/98		SCALE: 4 : 1		MATERIAL: FERRITE