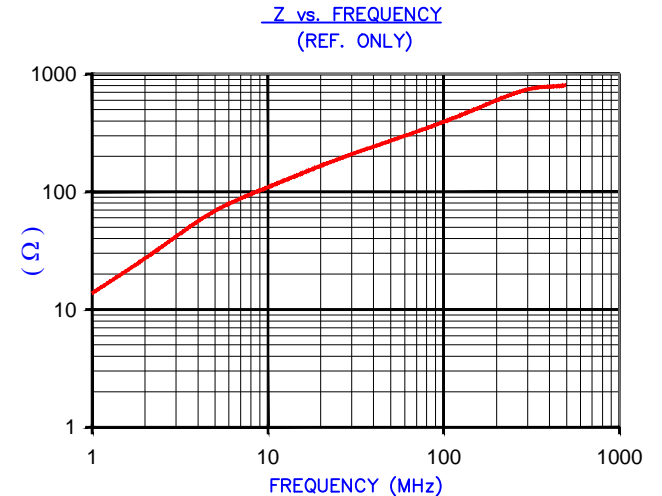


DETAIL "A"
CHAMFER
SCALE=15:1

UNCONTROLLED DOCUMENT



IMPEDANCE (Z)			
Frequency	25 MHz	100 MHz	300 MHz
Nominal (REF)	187 Ω	393 Ω	734 Ω
Minimum	- Ω	314 Ω	- Ω



AGILENT E4991A Impedance/Material Analyzer
HP 16092A-Test Fixture. TEST REF. 3715

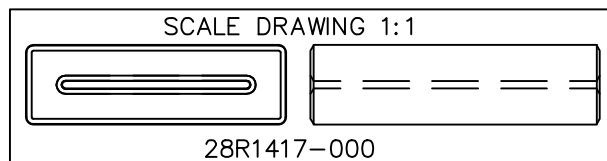
FERRITE CORE DIMENSIONS (SPEC): mm [in]

A	36.00 [1.417]	± 0.71 [.028]
B	26.00 [1.024]	± 0.46 [.018]
C	40.00 [1.575]	± 0.99 [.039]
D	11.00 [.433]	± 0.71 [.028]
E	1.00 [.039]	+ 0.50 [.020] - 0.30 [.012]

WEIGHT/1000 72.92 kgs [160.77 Lbs]

NOTES: UNLESS OTHERWISE SPECIFIED

1. COSMETIC SPECIFICATION REFER TO WI-QA-038.



DIMENSIONS ARE IN mm[INCHES].				This print is the property of Laird Tech. and is loaned in confidence subject to return upon request and with the understanding that no copies shall be made without the written consent of Laird Tech. All rights to design or invention are reserved.		Laird	
				PROJECT/PART NUMBER:		REV	DRAWN BY:
C	UPDATE COMPANY LOGO	06/19/15	QIU	28R1417-000		C	JRK
B	UPDATE Z SPEC AND COMPANY LOGO	07/27/07	JRK	DATE:	03/01/04	SCALE:	1.5 : 1
A	ORIGINAL DRAFT	03/01/04	JRK	CAD #	28R1417-000-C	TOOL #	R1417
REV	DESCRIPTION	DATE	INT			MATERIAL: FERRITE	