

DETAIL "A"  
CHAMFER  
SCALE=8:1

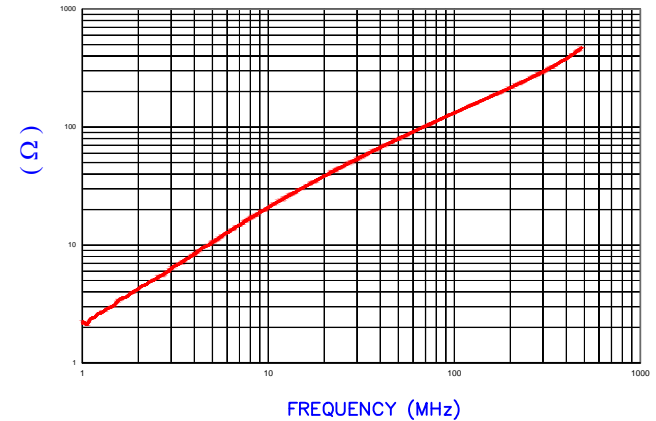


NOTES: UNLESS OTHERWISE SPECIFIED.

1. COSMETIC SPECIFICATION REFER TO WI-QA-038.

IMPEDANCE ( Z )			
Frequency	25 MHz	100 MHz	300 MHz
Nominal (REF)	47 Ω	132 Ω	307 Ω
Minimum	- Ω	106 Ω	- Ω

Z vs. FREQUENCY  
(REF. ONLY)

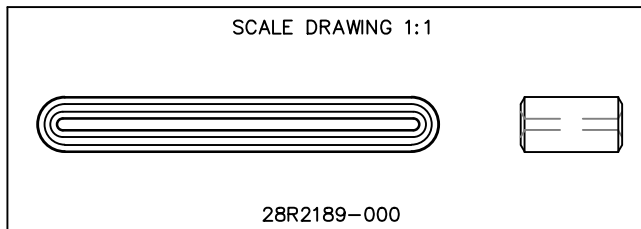


AGILENT E4991A Impedance/Material Analyzer  
HP 16092A Test Fixture, REF #3843

FERRITE CORE DIMENSIONS (SPEC):mm[Inches]

A	55.61 [2.189]	+	0.80 [.031]
B	50.00 [1.696]	+	0.80 [.031]
C	14.00 [.551]	+	0.38 [.015]
D	7.62 [.300]	+	0.76 [.030]
		-	0.30 [.012]
E	1.53 [.060]	+	0.35 [.014]

WEIGHT/1000 22.11 kgs [48.74 Lbs]



DIMENSIONS ARE IN mm[INCHES].				This print is the property of Laird Tech. and is loaned in confidence subject to return upon request and with the understanding that no copies shall be made without the written consent of Laird Tech. All rights to design or invention are reserved.			
PROJECT/PART NUMBER:	28R2189-000			REV	A	DRAWN BY: QIU	
DATE:	09/02/14	SCALE:	2 : 1	MATERIAL:		FERRITE	
REV	A	DESCRIPTION	ORIGINAL DRAFT	DATE	09/02/14	INT	QIU
				CAD #	28R2189-000-A	TOOL #	R2189