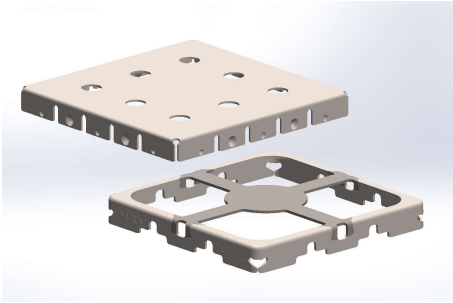


Low Height Standard Two-Piece Board Level Shields

Optimize PCB and Enclosure Real Estate - Reliable and Ease of Assembly – Ease of Repair - Short Lead Time – No Tool Cost



The low height standard two-piece board level shields incorporate removable pick bridge and rigid corners features along with a low, 2.15 mm assembled height. The frame has a removable pick bridge to allow easy access to components underneath for re-work or addition of thermal pads or other materials. The rigid corners enhance structure rigidity which preserves co-planarity. This innovative design offers an ideal solution for board-level EMI shielding applications in which access to the shielded components is required and space between the printed circuit board (PCB) and enclosure is critical.

FEATURES

- Low 2.15 mm assembled height (1.8 mm under frame)
- Same footprints as current BMI-S-202-F/C, BMI-S-203-F/C, and BMI-S-209-F/C
- 0.15 mm cover and 0.20 mm frame material thicknesses
- ReMovl™ Pick and Place Bridge
- Rigid corners for rigidity

BENEFITS

- Enables low height enclosures
- Enhanced co-planarity
- Easy access to components under the frame for rework or inspection
- Allows for a thermal interface material, an insulator film, and/or an absorber to be added to the cover
- Enables pick and place assembly process
- Removable Pick and Place Bridge for ease of removal after the frame is soldered to the PCB

VALUE

- Optimized PCB/enclosure real estate
- Ease of assembly
- High reliability of assembly
- Ease of repair
- Ready to ship (short lead time)
- No tooling costs

SAMPLES

Available at regional sample centers: Liberec, Schaumburg, and Shenzhen

Laird Performance Materials

DuPont Electronics & Industrial

Americas: +1 866 928-8181

Europe: +49 8031 2460 0

China: +86 7552 7141166

www.laird.com



PART NUMBER	DIMENSIONS (LxWxH; mm)	COPLANARITY (mm)	MATERIAL	FRAME OR COVER
BMI-S-202-C-20	16.90 x 16.90 x 1.75	n/a	Tin Plated CRS	Cover
BMI-S-202-F-20-R	16.50 x 16.50 x 2.00	0.08	Tin Plated CRS	Frame
BMI-S-203-C-20	26.61 x 26.61 x 1.75	n/a	Tin Plated CRS	Cover
BMI-S-203-F-20-R	26.21 x 26.21 x 2.00	0.08	Tin Plated CRS	Frame
BMI-S-209-C-20	29.86 x 19.00 x 1.75	n/a	Tin Plated CRS	Cover
BMI-S-209-F-20-R	29.36 x 18.50 x 2.00	0.10	Tin Plated CRS	Frame

EMI-DS-Low Height 2pc BLS-031622