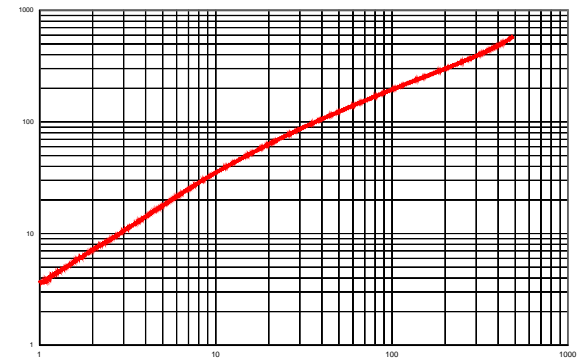


IMPEDANCE (Z)			
Frequency	25 MHz	100 MHz	300 MHz
Nominal (REF)	78 Ω	199 Ω	393 Ω
Minimum	- Ω	159 Ω	- Ω

Z vs. FREQUENCY
(REF. ONLY)



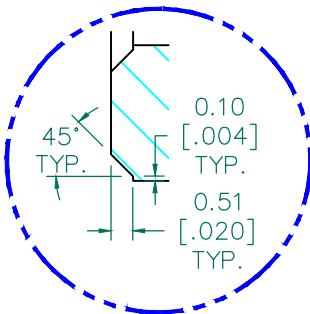
FREQUENCY (MHz)

AGILENT E4991A Impedance/Material Analyzer
HP 16092A-Test Fixture TEST REF. 2992

FERRITE CORE DIMENSIONS (SPEC): mm [in]

A	37.00 [1.457]	+ 0.64 [.025]
B	31.08 [1.224]	+ 0.51 [.020]
B1	32.58 [1.283]	+ REF.
C	25.00 [.984]	+ 0.60 [.024]
D	7.75 [.305]	+ 0.50 [.0197]
E	1.50 [.059]	+ 0.50 [.0197]

WEIGHT/1000 27.63 kgs [60.91 Lbs]



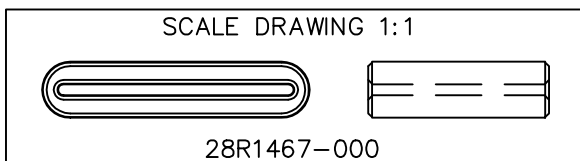
DETAIL "A"
CHAMFER
SCALE=6:1

UNCONTROLLED DOCUMENT

RoHS

NOTES: UNLESS OTHERWISE SPECIFIED

1. COSMETIC SPECIFICATION REFER TO WI-QA-038.



DIMENSIONS ARE IN mm[INCHES].				This print is the property of Laird Tech. and is loaned in confidence subject to return upon request and with the understanding that no copies shall be made without the written consent of Laird Tech. All rights to design or invention are reserved.		Laird		
				PROJECT/PART NUMBER:		REV	PART TYPE:	DRAWN BY:
				28R1467-000		F	FERRITE RIBBON CORE	JAJ
F	UPDATED Z SPECS & TEMPLATE	03/05/15	Jcai	DATE:	07/28/09	SCALE:	2 : 1	MATERIAL:
E	UPDATED Z SPECS & ADD TEST REF#	08/19/05	TMB	CAD #	28R1467-000-F	TOOL #	R1467	Ferrite
REV	DESCRIPTION	DATE	INT					