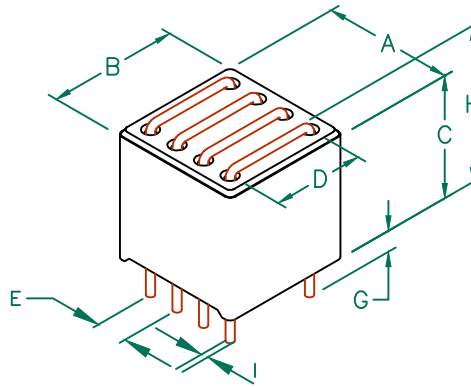


29F0428-0T0-10

RoHS

PHYSICAL DIMENSIONS:

A	10.88 [.428]	+ 0.15 [.006]
B	10.88 [.428]	+ 0.15 [.006]
C	10.57 [.416]	+ 0.20 [.008]
D	7.62 [.300]	+ 0.13 [.005]
E	2.54 [.100]	+ 0.05 [.002]
G	3.18 [.125]	+ 0.38 [.015]
H	11.43 [.450]	+ MAX
I	0.64 [.025]	+ REF

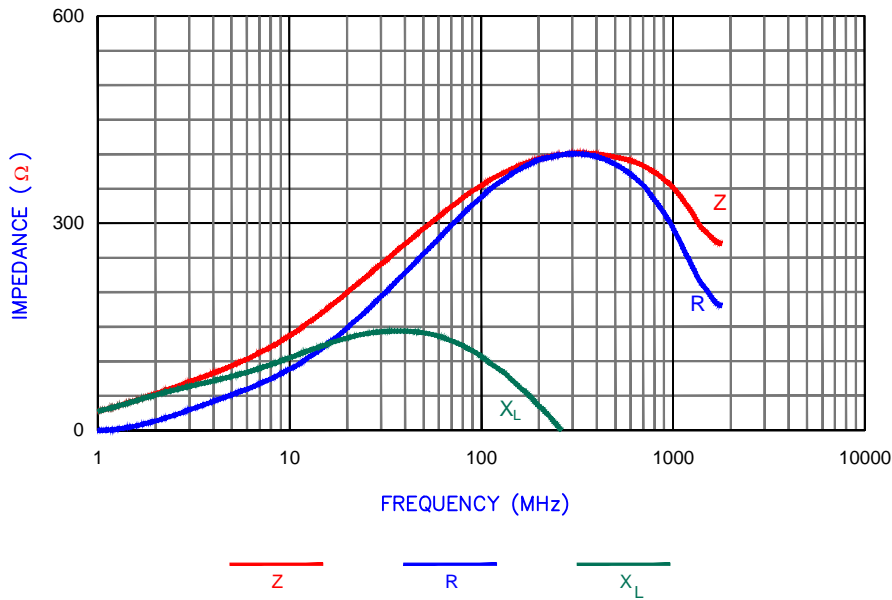


ELECTRICAL CHARACTERISTICS:			
Z @ 100MHz (Ω)	DCR (Ω)	Rated Current	
Nominal	342		
Minimum	257		
Maximum	427	0.01	10,000 mA

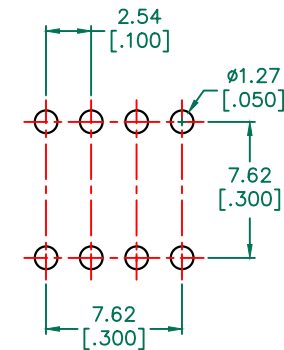
NOTES: UNLESS OTHERWISE SPECIFIED

1. BULK PACKED 910 per CASE.
2. COMPONENTS SHOULD BE ADEQUATELY PREHEATED BEFORE SOLDERING.
3. TERMINATION FINISH IS 100% TIN.
4. OPERATION TEMPERATURE (INCLUDING SELF-HEATING): -40 ~ +125°C.

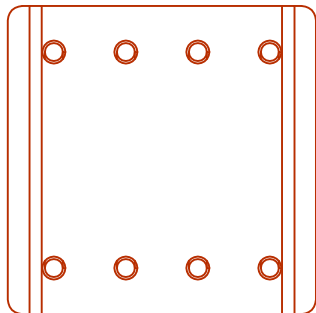
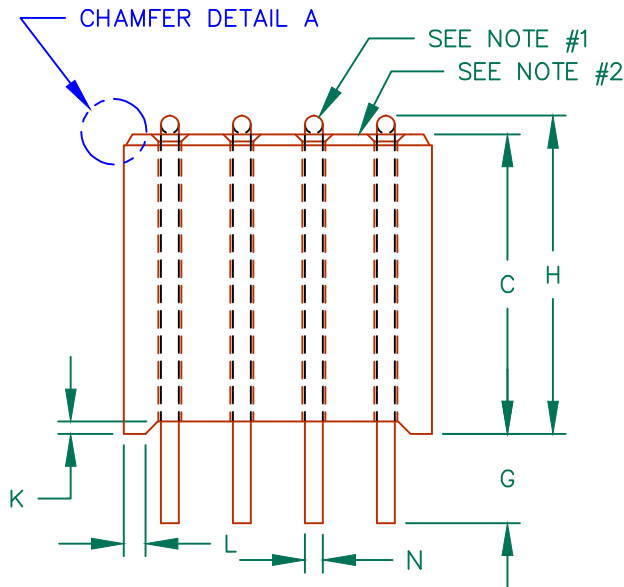
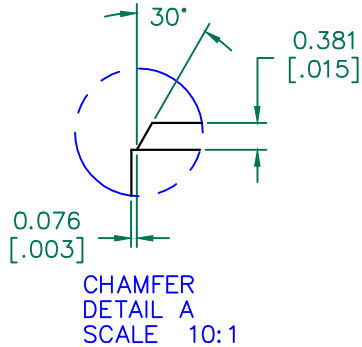
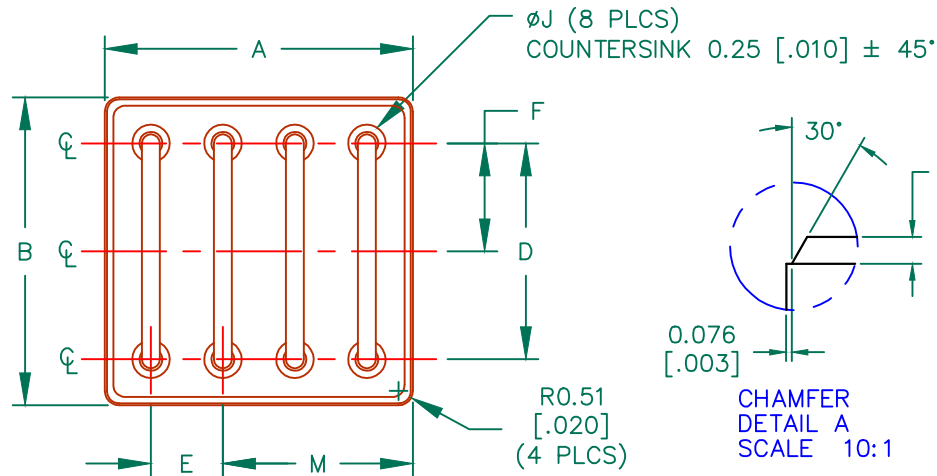
|Z|, R, AND X vs. FREQUENCY



HOLE PATTERN FOR THRU-HOLE INSERTION



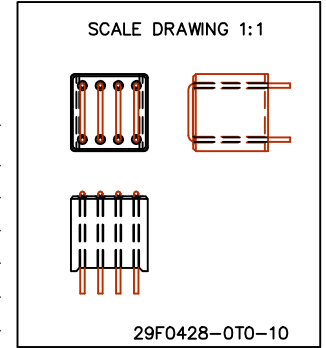
DIMENSIONS ARE IN mm [INCHES]				This print is the property of Laird Tech. and is loaned in confidence subject to return upon request and with the understanding that no copies shall be made without the written consent of Laird Tech. All rights to design or invention are reserved.		Laird			
E	ADD NOTE 6	08/30/12	QIU	PROJECT/PART NUMBER:	29F0428-0T0-10	REV	E	PART TYPE: CNZ ASSEMBLY	DRAWN BY: JRK
D	ADD I DIMENSION	09/09/10	JUN	DATE:	04/30/04	SCALE:	NTS	SHEET:	1 of 2
C	UPDATE COMPANY LOGO ADD ROHS SYM	10/21/08	JRK	CAD #	29F0428-0T0-10-E-1	TOOL #	H0428		
B	UPDATE COMPANY LOGO	05/01/07	JRK						
A	ORIGINAL DRAFT	04/30/04	JRK						
REV	DESCRIPTION	DATE	INT						



RoHS

ELECTRICAL TESTING

	GROSS	GROSS
TEST:	Z	Z
# TURNS	1	1
AWG	22	22
FREQUENCY	25 MHz	100 MHz
NOMINAL	205 Ω	342 Ω
MINIMUM	- Ω	257 Ω
MAXIMUM	- Ω	427 Ω
WEIGHT/1000	5.72 kgs.	12.6 lbs.



DIMENSIONS:

A	10.88 [.428]	+	0.15 [.006]
B	10.88 [.428]	+	0.15 [.006]
C	10.57 [.416]	+	0.20 [.008]
D	7.62 [.300]	+	0.13 [.005]
E	2.54 [.100]	+	0.05 [.002]
F	3.81 [.150]	+	0.05 [.002]
G	3.18 [.125]	+	0.38 [.015]
H	11.43 [.450]	+	MAX
J	0.81 [.032]	+	0.05 [.002]
K	0.43 [.017]	+	0.05 [.002]
L	0.76 [.030]	+	0.05 [.002]
M	6.71 [.264]	+	0.10 [.004]
N	0.64 [.025]	+	REF

NOTES: UNLESS OTHERWISE SPECIFIED

1. REF. STEWARD WIRE SPEC. W0428-01.
2. REF. STEWARD CORE P/N 29H0428-000.
3. ACCEPTABLE WIRE SPACING TO BE DETERMINED BY PLACING PART IN GAGE MATCHING BOARD. PART SHOULD INSERT EASILY WITHOUT REQUIRING WIRE STRAIGHTENING.
4. IMPEDANCE VALUES ARE GROSS, MEASURED USING W0428-01 WIRE.
5. TERMINATION FINISH IS 100% TIN.

DIMENSIONS ARE IN mm [INCHES].				This print is the property of Laird Tech. and is loaned in confidence subject to return upon request and with the understanding that no copies shall be made without the written consent of Laird Tech. All rights to design or invention are reserved.		
E	ADD NOTE 6	08/30/12	QIU			
D	ADD I DIMENSION	09/09/10	JUN			
C	UPDATE COMPANY LOGO ADD ROHS SYM	10/21/08	JRK			
B	UPDATE COMPANY LOGO	05/01/07	JRK			
A	ORIGINAL DRAFT	04/30/04	JRK			
REV	DESCRIPTION	DATE	INT	PROJECT/PART NUMBER: 29F0428-0T0-10	REV E PART TYPE: CNZ ASSEMBLY	DRAWN BY: JRK
				DATE: 04/30/04	SCALE: NTS SHEET:	2 of 2
				CAD # 29F0428-0T0-10-E-2	TOOL # H0428	