

ROHS Test Lab
Laird Technologies (shenzhen) Ltd.
Building Dejin Industrial Park, FuYuanyi Road, FuYong Town, BaoAn District, ShenZhen, China

Applicant : Tianjin Laird technologiesCo.Ltd
Address: C3&C4 Hongtai Industry Park ,No.87Taifeng Road,TEDA,Tianjin,300457

Report on the submitted sample said to be:

Sample Name : SNC70-RXP
Sample Type :
Lot#:
Manufacture : Laird -Tianjin
Sample Received Date : Mar 10 2009
Completed Date : Mar 13 2009
Test Requested : Cr (VI) 、 Cd、 Hg、 Pb、 PBB、 PBDE、 F、 Cl、 Br、 I。

Test Method:

With reference to EPA 3052 & EPA 6010C,the content of Cd、 Pb 、 Hg were detected by the following method:

(1) Determination of Cadmium\Lead\Mercury by ICP-AES

With reference to EPA 3060A & EPA 7196A ,the content of Cr (VI) was detected by the following method:

(2) Determination of Hexavalent Chromium by UV-VIS

With reference to EPA 3540C/ 3546/3550C & EPA 8270D, the content of PBB、 PBDE were detected by the following method:

(3) Determination of PBBs/PBDEs by GC-MS

With reference to BS EN14582,the content of F、 Cl、 Br、 I were detected by the following method:

(4) Determination of Fluorine / Chlorine / Bromine / Iodine /by IC

Test Result:

Please refer to the following page.

Reported by:

Approved by:

韦如杰

Rujie Wei
Chemistry Engineer

Hongwu Pang
ROHS Test Lab Supervisor

ROHS Test Lab

Laird Technologies (shenzhen) Ltd.

Building Dejin Industrial Park, FuYuanyi Road, FuYong Town, BaoAn District, ShenZhen, China

Test result by chemical method: (Unit:mg/Kg)

Test Item(s)	Method	Result	MDL
Cadmium(Cd)	(1)	ND	2ppm
Lead (Pb)		ND	2ppm
Mercury (Hg)		ND	2ppm
Chromium (Cr ⁶⁺)	(2)	ND	2ppm
Sum of PBBs	(3)	ND	----
Monobromobiphenyl		ND	5ppm
Dibromobiphenyl		ND	5ppm
Tribromobiphenyl		ND	5ppm
Tetrabromobiphenyl		ND	5ppm
Pentabromobiphenyl		ND	5ppm
Hexabromobiphenyl		ND	5ppm
Heptabromobiphenyl		ND	5ppm
Octabromobiphenyl		ND	5ppm
Nonabromobiphenyl		ND	5ppm
Decabromobiphenyl		ND	5ppm
Sum of PBDEs		ND	-----
Monobromodiphenyl ether		ND	5ppm
Dibromodiphenyl ether		ND	5ppm
Tribromodiphenyl ether		ND	5ppm
Tetrabromodiphenyl ether		ND	5ppm
Pentabromodiphenyl ether		ND	5ppm
Hexabromodiphenyl ether		ND	5ppm
Heptabromodiphenyl ether		ND	5ppm
Octabromodiphenyl ether		ND	5ppm
Nonabromodiphenyl ether	ND	5ppm	
Decabromodiphenyl ether	ND	5ppm	
Fluorine (F)	(4)	ND	10ppm
Chlorine (Cl)		ND	10ppm
Bromine(Br)		ND	10ppm
Iodine(I)		ND	10ppm

Note:

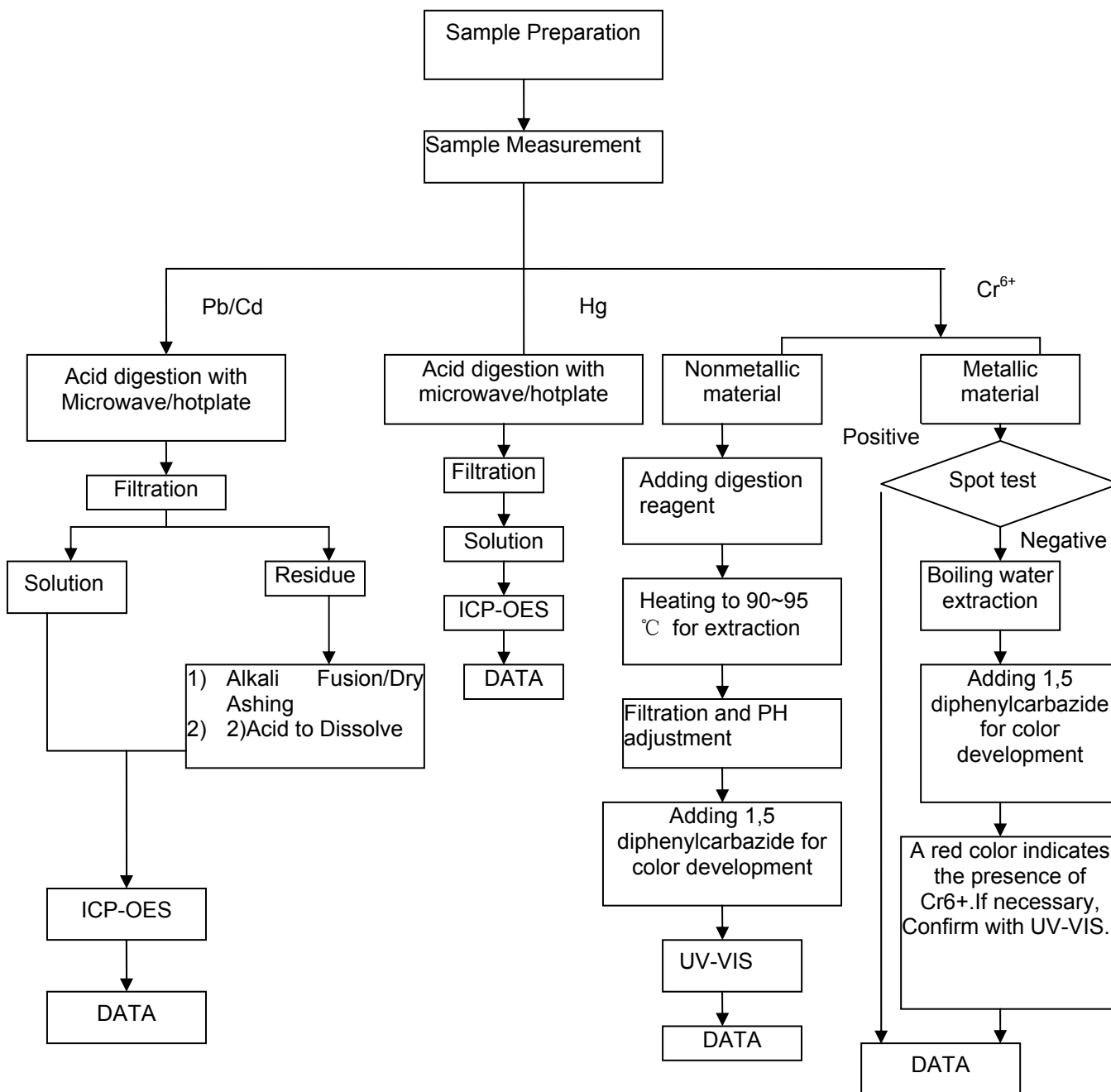
1. mg/kg=ppm
2. N.D.=Not Detected(<MDL)
3. MDL=Method Detection limited
4. “-“= not regulated

ROHS Test Lab
Laird Technologies (shenzhen) Ltd.
Building Dejin Industrial Park, FuYuanyi Road, FuYong Town, BaoAn District, ShenZhen, China

Attachment:

Flow chart for Pb/Cd/Hg/Cr⁶⁺ Test

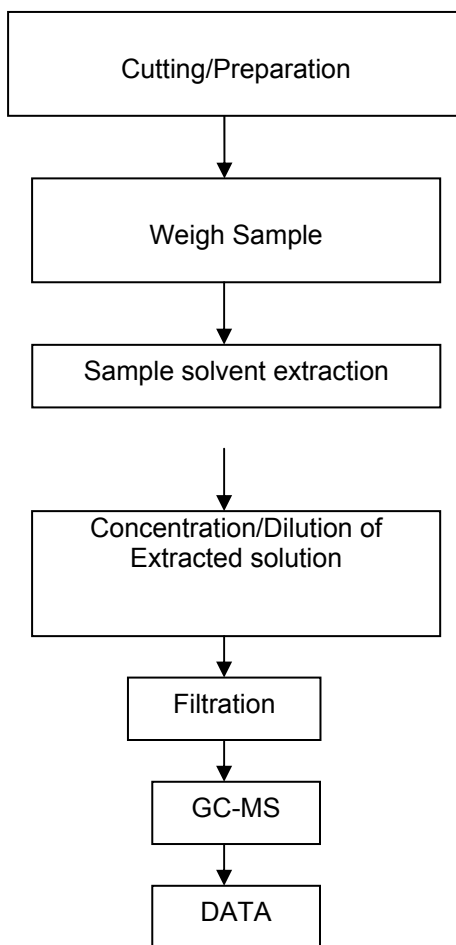
- 1) Pb/Cd/Hg was done by: Rujie Wei;
- 2) Cr⁶⁺ was done by :Rujie Wei
- 3) The test was reviewed by: Hongwu Pang



ROHS Test Lab
Laird Technologies (shenzhen) Ltd.
Building Dejin Industrial Park, FuYuanyi Road, FuYong Town, BaoAn District, ShenZhen, China

Flow chart for PBBs/PBDEs Test

- 1) The test was done by: Lei Shi
- 2) The test was reviewed by: Hongwu Pang



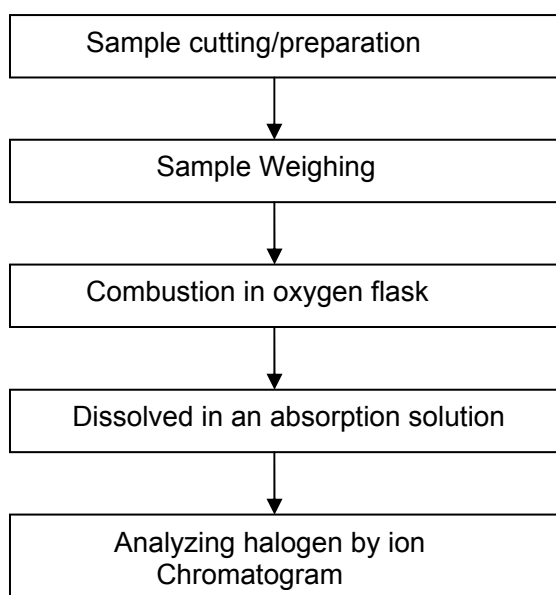
ROHS Test Lab

Laird Technologies (shenzhen) Ltd.

Building Dejin Industrial Park, FuYuanyi Road, FuYong Town, BaoAn District, ShenZhen, China

Flow chart for Halogen

- 1) The test was done by: Shichao Wang
- 2) The test was reviewed by: Hongwu Pang



ROHS Test Lab
Laird Technologies (shenzhen) Ltd.
Building Dejin Industrial Park, FuYuanyi Road, FuYong Town, BaoAn District, ShenZhen, China

Photo of the sample



End of report