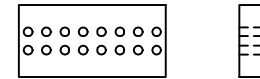


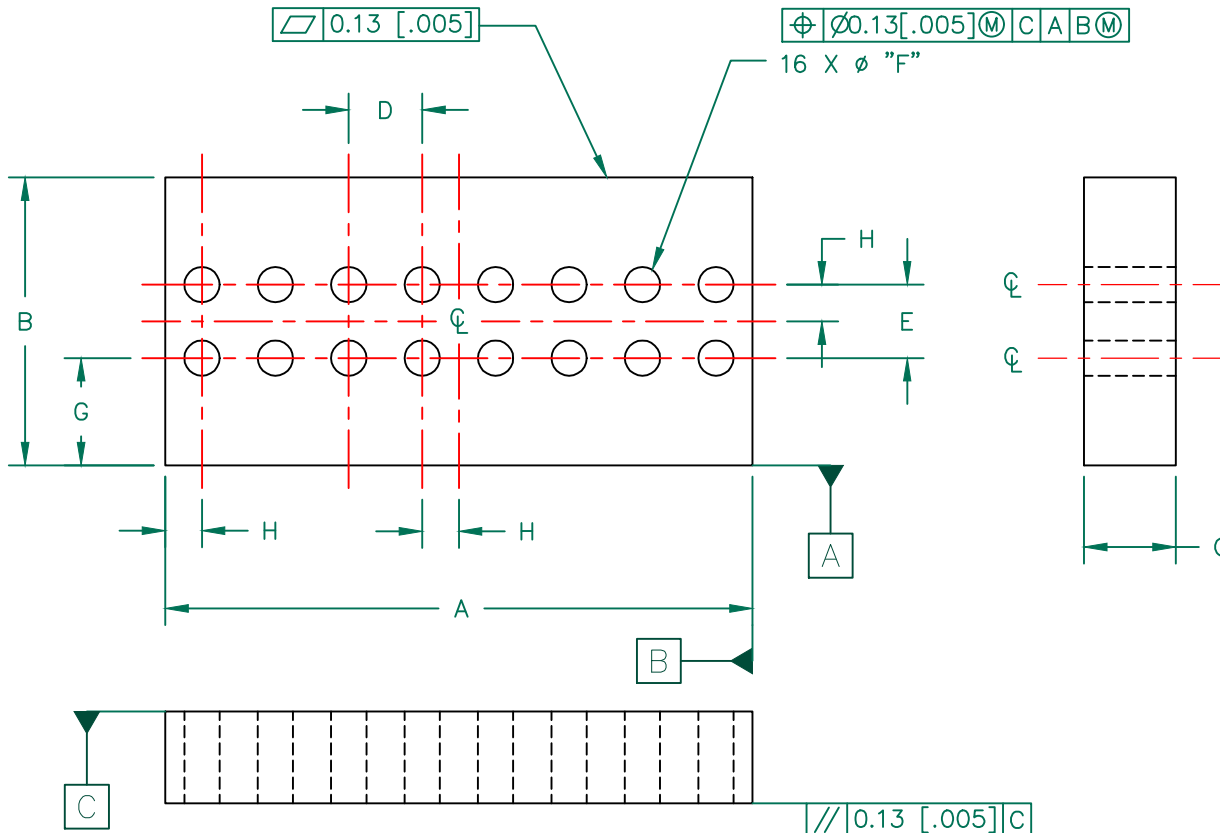
SCALE DRAWING 1:1



29D3800-000

ELECTRICAL TESTING

TEST:	Z	Z
# TURNS	1	1
AWG	-	-
FREQUENCY	25 MHz	100 MHz
NOMINAL	21 Ω	38 Ω
MINIMUM	16 Ω	29 Ω
MAXIMUM	- Ω	48 Ω
WEIGHT/K	6.4 #	



CORE DIMENSIONS:

A	20.32 [.800]	+	0.30 [.012]
B	9.96 [.392]	+	0.15 [.006]
C	3.18 [.125]	+	0.08 [.003]
D	2.54 [.100]	+	0.08 [.003]
E	2.54 [.100]	+	0.08 [.003]
F	1.22 [.048]	+	0.05 [.002]
G	3.73 [.147]	+	0.05 [.002]
H	1.27 [.050]	+	0.05 [.002]

DIMENSIONS ARE IN mm [INCHES].				This print is the property of Laird Tech. and is loaned in confidence subject to return upon request and with the understanding that no copies shall be made without the written consent of Laird Tech. All rights to design or invention are reserved.			
REV	DESCRIPTION	DATE	INT				
H	UPDATE COMPANY LOGO	01/07/13	QIU	29D3800-000		H	JBE
G	UPDATE PRINT FORMAT. ADD Z SPEC (MAX). REVISE DIMENSIONS & TOLERANCES, Z SPECS, & WEIGHT/K REMOVE CRITICAL PARAMETER PER ENGR	11/10/00	TMB	DATE:	11/07/90	SCALE:	4 : 1
F	UPDATE PRINT FORMAT, ADD GEO. TOL.	08/05/97	I.S.	CAD #	29D3800-000-H	TOOL #	D3800
E	UPDATE REV BLK & Z SPECS PER ENG	11/20/96	BAC	MATERIAL: FERRITE			
D	UPDATED PRINT FOR CATALOG	09/26/96	JBE				
C	CHANGED P/N & UPDATE Z	09/08/95	JBE				
B	UPDATE PRINT	11/28/94	JBE				
A	ORIGINAL DRAFT	11/07/90	-				
REV	DESCRIPTION	DATE	INT				