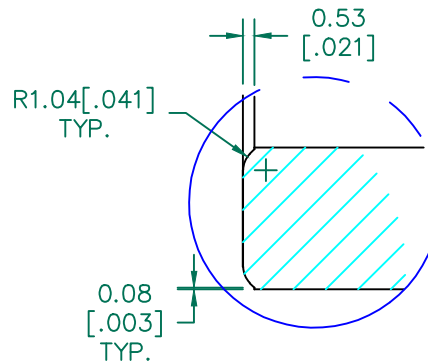


RoHS

SEE DETAIL "A"

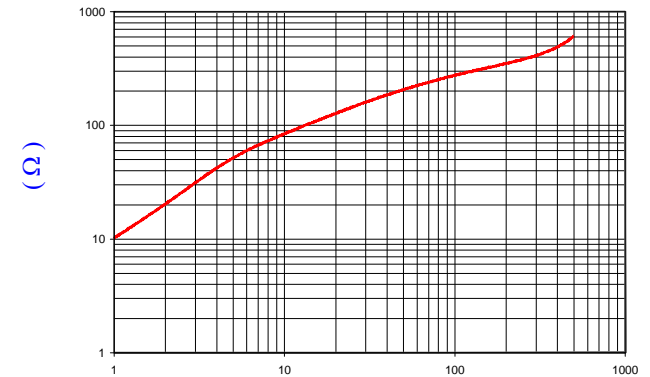
SECTION A-A



CHAMFER  
DETAIL A  
SCALE" 3:1

IMPEDANCE ( Z )			
Frequency	25 MHz	100 MHz	300 MHz
Nominal (REF)	147 Ω	276 Ω	412 Ω
Minimum	- Ω	220 Ω	- Ω

Z vs. FREQUENCY  
(REF. ONLY)



FREQUENCY (MHz)

AGILENT E4991A Impedance/Material Analyzer  
HP 16092A-Test Fixture

NOTES: UNLESS OTHERWISE SPECIFIED

1. COSMETIC SPECIFICATION REFER TO WI-QA-038.
2. DLB SPEC (BLACK EPOXY COATING):  
500VAC MIN @ 6.17LBS

FERRITE CORE DIMENSIONS (SPEC): mm [in]

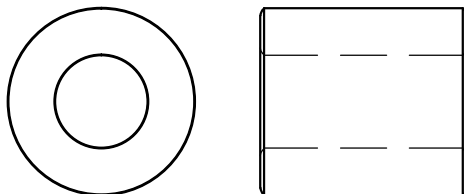
A	25.91 [1.020]	±	0.46 [.018]
B	12.83 [.505]	±	0.25 [.010]
C	28.58 [1.125]	±	0.76 [.030]

COATED CORE DIMENSIONS (SPEC): mm [in]

A	25.99 [1.023]	±	0.50 [.020]
B	12.75 [.502]	±	0.35 [.014]
C	28.66 [1.128]	±	0.80 [.032]

WEIGHT/1000 56.01 kgs [123.49 Lbs]

SCALE DRAWING 1:1



28B1020-10G

DIMENSIONS ARE IN mm [INCHES].

This print is the property of Laird Tech. and is loaned in confidence subject to return upon request and with the understanding that no copies shall be made without the written consent of Laird Tech. All rights to design or invention are reserved.



				PROJECT/PART NUMBER:		REV	PART TYPE:	DRAWN BY:
C	UPDATE LOGO	06/01/21	GZ	28B1020-10G		C	FERRITE CORE	Jcai
B	CHANGE NOTE AND UPDATE DIMENSIONS	01/19/10	Jcai	DATE:	01/04/10	SCALE:	1.5 : 1	MATERIAL:
A	ORIGINAL DRAFT	01/04/10	Jcai	CAD #	28B1020-10G-C	TOOL #	B1020	FERRITE
REV	DESCRIPTION	DATE	INT					