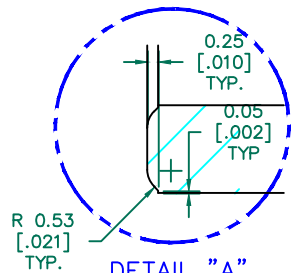


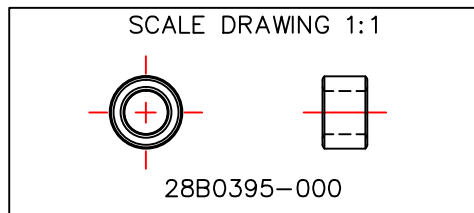
SEE DETAIL "A"



DETAIL "A"
CHAMFER
SCALE=6:1

NOTES: UNLESS OTHERWISE SPECIFIED

1. COSMETIC SPECIFICATION REFER TO WI-QA-038.

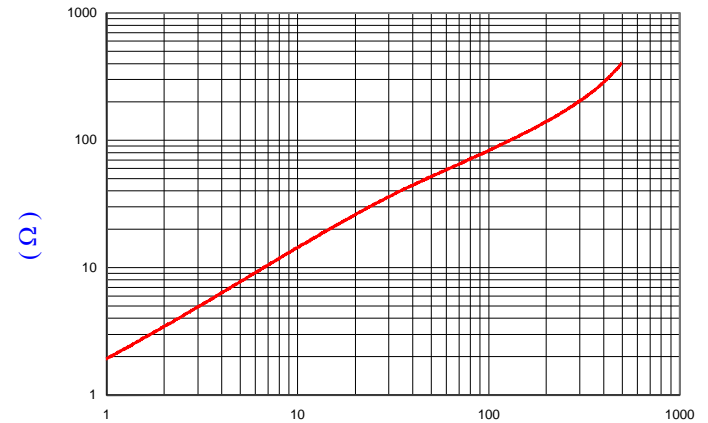


RoHS

IMPEDANCE (Z)

Frequency	25 MHz	100 MHz	300 MHz
Nominal (REF)	31 Ω	83 Ω	199 Ω
Minimum	- Ω	66 Ω	- Ω

Z vs. FREQUENCY
(REF. ONLY)



FREQUENCY (MHz)

AGILENT E4991A Impedance/Material Analyzer
HP 16092A Test Fixture, REF# 5900

FERRITE CORE DIMENSIONS (SPEC):mm [Inches]

A	10.01 [.394]	±	0.20 [.008]
B	5.97 [.235]	±	0.15 [.006]
C	6.17 [.243]	±	0.13 [.005]

WEIGHT/1000 1.52 kgs [3.36 Lbs]

DIMENSIONS ARE IN mm [INCHES].				This print is the property of Laird Tech. and is loaned in confidence subject to return upon request and with the understanding that no copies shall be made without the written consent of Laird Tech. All rights to design or invention are reserved.		Laird		
E	UPDATED LOGO ADD NOTE	07/31/17	QIU	PROJECT/PART NUMBER:		REV	PART TYPE:	DRAWN BY:
D	ADD Z CURVE AND Z SPECS	09/18/07	JRK	28B0395-000		E	FERRITE CORE	DTR
C	REACTIVATE PRINT AND UPATE PRINT FORMAT AND UPDATE COMPANY LOGO	08/23/07	TMB	DATE:	06/25/98	SCALE:	3:1	MATERIAL:
B	UPDATE PRINT FORMAT & PART PROFILE	05/31/02	TMB	CAD #	28B0395-000-E	TOOL #	B0395	Ferrite
A	ORIGINAL DRAFT	06/25/98	DTR					
REV	DESCRIPTION	DATE	INT					