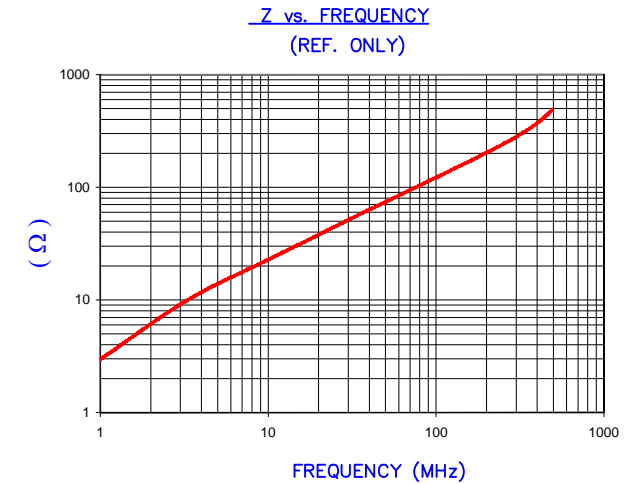


DETAIL "A"
CHAMFER
SCALE=20:1

NOTES: UNLESS OTHERWISE SPECIFIED

1. COSMETIC SPECIFICATION REFER TO WI-QA-038.

IMPEDANCE (Z)			
Frequency	25 MHz	100 MHz	300 MHz
Nominal (REF)	43 Ω	116 Ω	270 Ω
Minimum	- Ω	104 Ω	- Ω

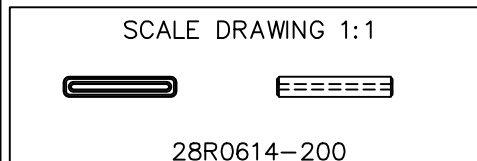


AGILENT E4991A Impedance/Material Analyzer
HP 16092A-Test Fixture, REF # 2965

FERRITE CORE DIMENSIONS (SPEC): mm [in]

A	15.60 [.614]	±	0.30 [.012]
B	13.60 [.535]	±	0.26 [.010]
C	16.00 [.630]	±	0.38 [.015]
D	2.80 [.110]	±	0.20 [.008]
E	0.70 [.028]	±	0.15 [.006]

WEIGHT/1000 2.62 kgs [5.78 Lbs]



DIMENSIONS ARE IN mm [INCHES].				This print is the property of Laird Tech. and is loaned in confidence subject to return upon request and with the understanding that no copies shall be made without the written consent of Laird Tech. All rights to design or invention are reserved.				
REV	DESCRIPTION	DATE	INT					
F	UPDATED LOGO	01/04/20	DU	PROJECT/PART NUMBER: 28R0614-200		REV F	PART TYPE: FERRITE CNZ CORE	DRAWN BY: JRK
E	UPDATE COMPANY LOGO UPDATE TOLERANCES ON DIMS A & B	01/14/09	JRK					
D	RE-ACTIVATE PRINT	03/16/06	JRK					
C	UPDATE MIN Z SPECS @100 Mhz ADD REF #	01/22/04	JRK					
B	UPDATE FORMAT CURVE & Z SPECS	05/05/03	JRK					
A	ORIGINAL DRAFT	10/14/02	JRK	DATE: 01/04/20		SCALE: 6:1	MATERIAL:	
REV	DESCRIPTION	DATE	INT	CAD # 28R0614-200-F		TOOL # R0614	NiZn Ferrite	