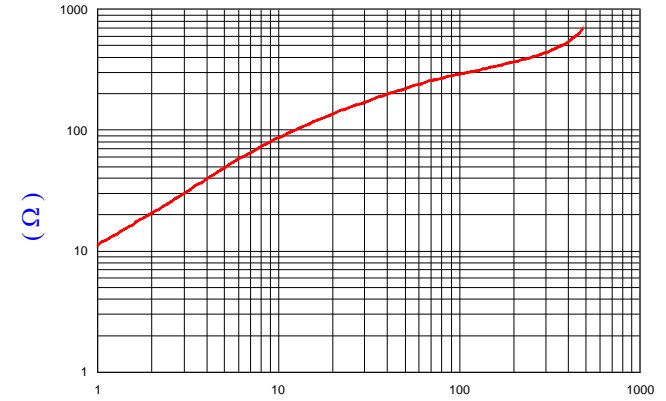


DETAIL A

SECTION A-A

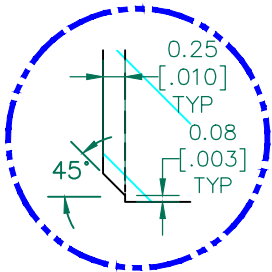
NET IMPEDANCE (Z)			
Frequency	300 MHz	500 MHz	1 GHz
Nominal (REF)	157 Ω	292 Ω	436 Ω
Minimum	- Ω	233 Ω	- Ω

NET Z,R AND X vs. FREQUENCY
(REF. ONLY)



FREQUENCY (MHz)

AGILENT E4991A Impedance/Material Analyzer
HP 16092A-Test Fixture



CHAMFER DETAIL
SCALE: 12:1

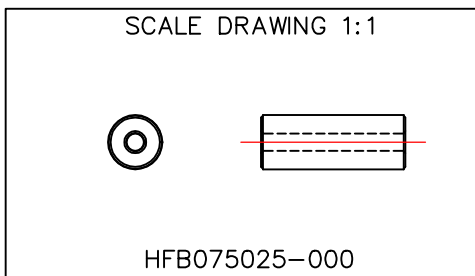
NOTES: UNLESS OTHERWISE SPECIFIED

1. COSMETIC SPECIFICATION REFER TO WI-QA-038.

FERRITE CORE DIMENSIONS (SPEC) MM [inches]:

A	7.50 [.295]	±	0.30 [.012]
B	2.39 [.094]	±	0.15 [.006]
C	20.00 [.787]	+ -	0.30 [.012] 0.50 [.020]

WEIGHT/1000 3.90 kgs [8.61 Lbs]



DIMENSIONS ARE IN mm [INCHES].				This print is the property of Laird Tech. and is loaned in confidence subject to return upon request and with the understanding that no copies shall be made without the written consent of Laird Tech. All rights to design or invention are reserved.		Laird	
E	UPDATE TOL C	12/07/15	Jcai	PROJECT/PART NUMBER:	REV	PART TYPE:	DRAWN BY:
D	UPDATE TOL	11/23/15	Jcai	HFB075025-000	E	FERRITE CORE	JRK
C	UPDATE THE LOGO	06/19/15	QIU	DATE:	SCALE:	MATERIAL:	
B	UPDATE COMPANY LOGO ADD CURVE	08/14/08	JRK	08/09/06	4:1	HF	
A	ORIGINAL DRAFT	08/09/06	JRK	CAD #	TOOL #		
REV	DESCRIPTION	DATE	INT	HFB075025-000-E	HFB075024		