

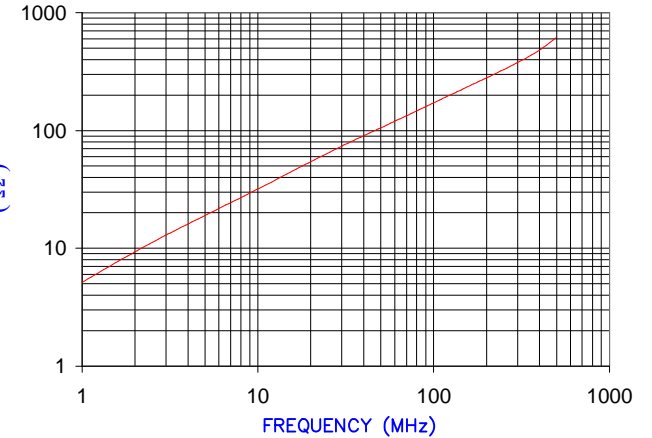
DETAIL "A"  
CHAMFER  
SCALE=4.5:1

SEE DETAIL "A"

SECTION A-A

IMPEDANCE ( Z )			
Frequency	25 MHz	100 MHz	300 MHz
Nominal (REF)	65 Ω	170 Ω	375 Ω
Minimum	- Ω	136 Ω	- Ω

Z vs. FREQUENCY  
(REF. ONLY)



AGILENT E4991A Impedance/Material Analyzer  
HP 16092A-Test Fixture, REF #2981

FERRITE CORE DIMENSIONS (SPEC): mm [in]

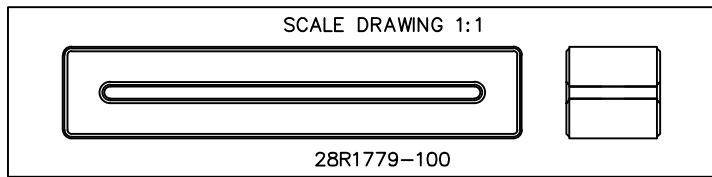
A	63.50 [2.500]	+ 0.75 [.030]
B	52.07 [2.050]	+ 1.02 [.040]
C	12.98 [.511]	+ 0.38 [.015]
D	12.70 [.500]	+ 0.51 [.020]
E	1.68 [.066]	+ 0.51 [.020]

WEIGHT/1000 45.72 kgs [100.80 Lbs]



NOTES: UNLESS OTHERWISE SPECIFIED

1. COSMETIC SPECIFICATION REFER TO WI-QA-038.



DIMENSIONS ARE IN mm[INCHES].				This print is the property of Laird Tech. and is loaned in confidence subject to return upon request and with the understanding that no copies shall be made without the written consent of Laird Tech. All rights to design or invention are reserved.			
REV	DESCRIPTION	DATE	INT				
M	UPDATE TOL A	03/21/2019	Jcai	PROJECT/PART NUMBER: <b>28R1779-100</b>		REV <b>M</b>	DRAWN BY: LNK
L	UPDATE COMPANY LOGO	01/02/13	QIU				
K	UPDATE MIN Z SPECS & COMPANY LOGO	07/27/07	TMB	DATE: 02/24/93		SCALE: 1.5 : 1	MATERIAL: <b>FERRITE</b>
J	UPDATE MIN Z SPEC ADD TEST REF#	11/18/04	JRK				
H	CHANGE PRINT FORMAT CHANGE Z SPECS REMOVE NOTE 1	05/19/03	TMB	TOOL # R1779			
G	CHANGE Kgs FROM 101.20 Kgs TO 45.72 Kgs	09/24/02	TMB				
REV	DESCRIPTION	DATE	INT	CAD # 28R1779-100-M			