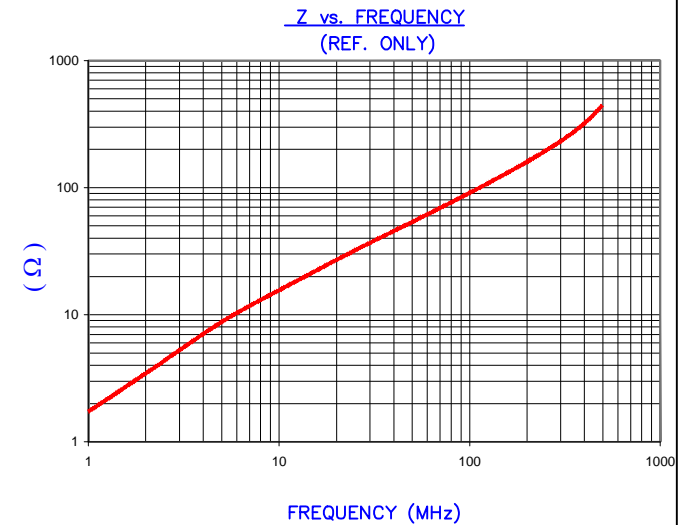


DETAIL "A"
CHAMFER
SCALE=15:1

IMPEDANCE (Z)			
Frequency	25 MHz	100 MHz	300 MHz
Nominal (REF)	32 Ω	91 Ω	227 Ω
Minimum	- Ω	82 Ω	- Ω

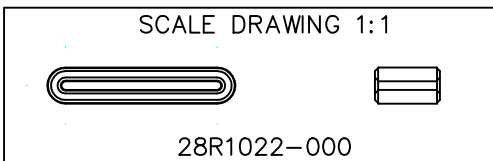


AGILENT E4991A Impedance/Material Analyzer
HP 16092A-Test Fixture ref 5679

FERRITE CORE DIMENSIONS (SPEC): mm [in]

A	26.00 [1.022]	±	0.50 [.020]
B	22.00 [.866]	±	0.48 [.019]
C	9.00 [.354]	±	0.30 [.012]
D	5.00 [.197]	±	0.30 [.012]
E	1.20 [.047]	±	0.30 [.012]
		-	0.25 [.010]

WEIGHT/1000 4.26 kgs [9.39 Lbs]



DIMENSIONS ARE IN mm[INCHES].				This print is the property of Laird Tech. and is loaned in confidence subject to return upon request and with the understanding that no copies shall be made without the written consent of Laird Tech. All rights to design or invention are reserved.					
REV	DESCRIPTION	DATE	INT						
F	UPDATE COMPANY LOGO	06/16/21	GZ	PROJECT/PART NUMBER: 28R1022-000		REV	F	PART TYPE: FERRITE RIBBON CORE	DRAWN BY: JRK
E	UPDATE COMPANY LOGO	03/17/08	JRK						
D	UPDATE Z SPECS ADD CURVE	05/25/06	JRK	DATE:	04/07/06	SCALE:	3 : 1	MATERIAL:	NiZn Ferrite
C	ROUND PART UPDATE WGT & DIMS	04/18/06	JRK	CAD #	28R1022-000-F	TOOL #	R1022		
B	ADD Z SPECS CHANGE TOLERANCES	04/10/06	JRK						
A	ORIGINAL DRAFT	04/07/06	JRK						
REV	DESCRIPTION	DATE	INT						