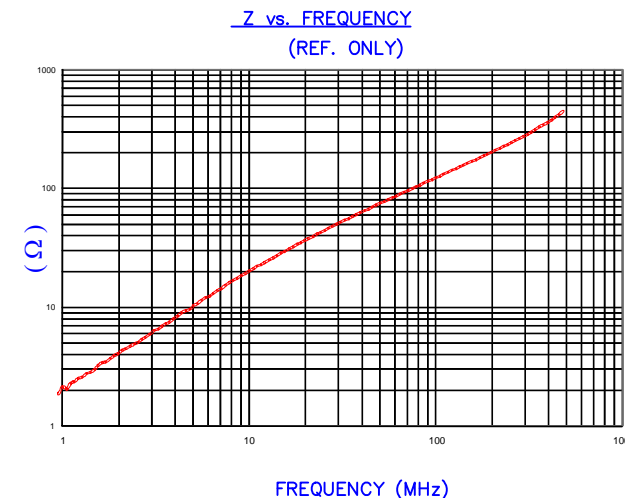


DETAIL "A"  
CHAMFER  
SCALE=6:1



IMPEDANCE ( Z )			
Frequency	25 MHz	100 MHz	300 MHz
Nominal (REF)	44 Ω	123 Ω	275 Ω
Minimum	- Ω	99 Ω	- Ω



AGILENT E4991A Impedance/Material Analyzer  
HP 16092A Test Fixture, REF # -

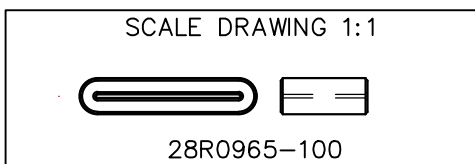
FERRITE CORE DIMENSIONS (SPEC):mm[Inches]

A	24.50 [.965]	+ 0.50 [.020]	- 0.50 [.020]
B	20.00 [.787]	+ 0.50 [.020]	- 0.50 [.020]
C	12.00 [.472]	+ 0.30 [.012]	- 0.30 [.012]
D	5.00 [.197]	+ 0.00 [.000]	- 0.70 [.027]
E	0.50 [.020]	+ 0.60 [.024]	- 0.00 [.000]

WEIGHT/1000 5.43 kgs [11.97 Lbs]

NOTES: UNLESS OTHERWISE SPECIFIED

1. COSMETIC SPECIFICATION REFER TO WI-QA-038.



DIMENSIONS ARE IN mm [INCHES].				This print is the property of Laird Tech. and is loaned in confidence subject to return upon request and with the understanding that no copies shall be made without the written consent of Laird Tech. All rights to design or invention are reserved.					
PROJECT/PART NUMBER:	28R0965-100			REV	B	PART TYPE:	FERRITE RIBBON CORE	DRAWN BY:	QIU
DATE:	09/05/12	SCALE:	2:1	MATERIAL:	Ferrite				
CAD #	28R0965-100-B	TOOL #	R0965						
REV	DESCRIPTION	DATE	INT						
B	UPDATE COMPANY LOGO	06/16/21	GZ						
A	ORIGINAL DRAFT	09/05/12	QIU						