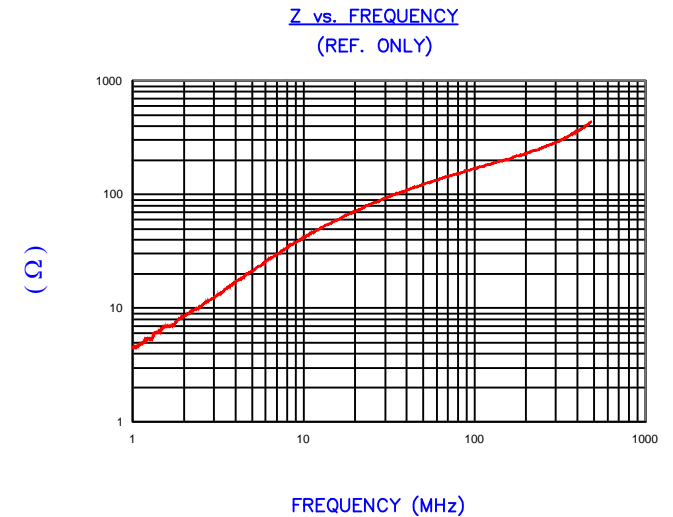


RoHS

IMPEDANCE (Z)			
Frequency	25 MHz	100 MHz	300 MHz
Nominal (REF)	84 Ω	169 Ω	286 Ω
Minimum	- Ω	136 Ω	- Ω



AGILENT E4991A Impedance/Material Analyzer
HP 16092A Test Fixture

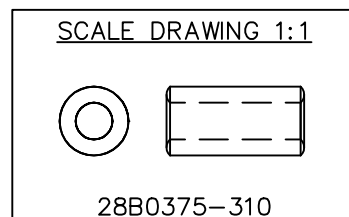
FERRITE CORE DIMENSIONS (SPEC): mm [in]

A	9.53 [.375]	±	0.20 [.008]
B	5.08 [.200]	±	0.15 [.006]
C	19.05 [.750]	±	0.51 [.020]

WEIGHT/1000 4.73 kgs 10.42 Lbs.

NOTES:

1. COSMETIC SPECIFICATION REFER TO WI-QA-038.



DIMENSIONS ARE IN mm [INCHES].				<div> This print is the property of Laird Tech. and is loaned in confidence subject to return upon request and with the understanding that no copies shall be made without the written consent of Laird Tech. All rights to design or invention are reserved. </div> <div> </div>			
REV	DESCRIPTION	DATE	INT				
D	UPDATE LOGO	09/07/16	QIU	<div> PROJECT/PART NUMBER: 28B0375-310 </div> <div> DATE: 10/08/03 </div> <div> CAD # 28B0375-310-D </div>			
C	CHANGE CHAMFER TO RADIUS	09/01/09	JRK				
B	RE-ACTIVATE PRINT UPDATE CO LOGO UPDATE Z SPECS AND Z CURVE	05/27/09	JRK	<div> SCALE: 3 : 1 </div> <div> MATERIAL: Ferrite </div>			
A	ORIGINAL DRAFT	10/08/03	TMB				
REV	DESCRIPTION	DATE	INT	<div> PART TYPE: FERRITE CORE </div> <div> DRAWN BY: TMB </div>			