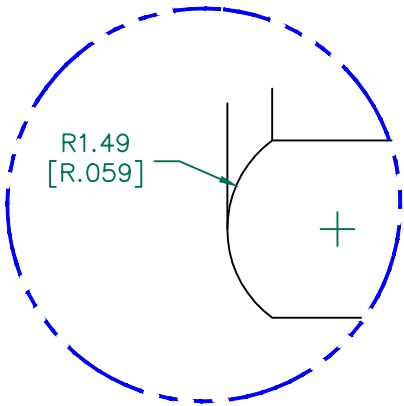


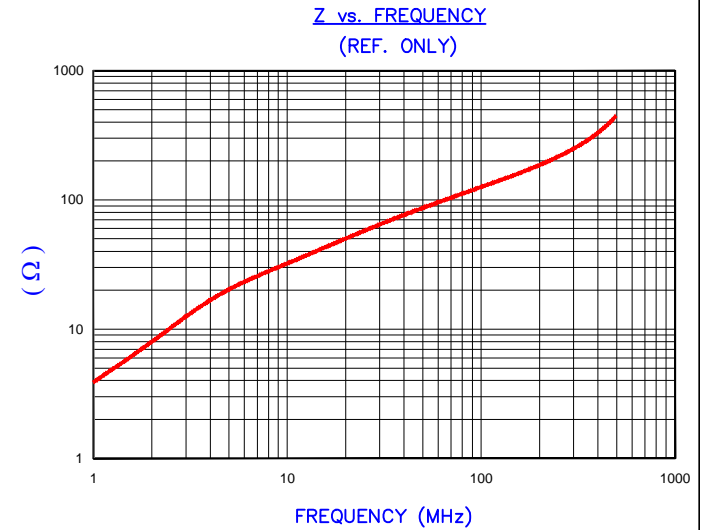
SECTION A-A



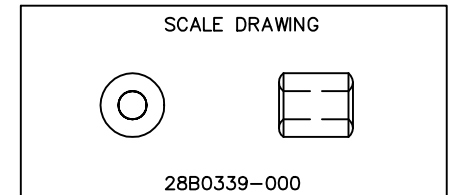
DETAIL "A"
SCALE 10:1



IMPEDANCE (Z)			
Frequency	25 MHz	100 MHz	300 MHz
Nominal (REF)	68 Ω	143 Ω	264 Ω
Minimum	- Ω	114 Ω	- Ω



AGILENT E4991A Impedance/Material Analyzer
HP 16092A-Test Fixture, REF # 3903



NOTES: UNLESS OTHERWISE SPECIFIED

1. COSMETIC SPECIFICATION REFER TO WI-QA-038.

FERRITE CORE DIMENSIONS (SPEC):mm [Inches]

A	8.60 [.339]	±	0.18 [.007]
B	3.80 [.150]	±	0.13 [.005]
C	10.00 [.394]	±	0.20 [.008]

WEIGHT/1000 2.23 kgs [4.92 Lbs]

DIMENSIONS ARE IN MM [INCHES].				This print is the property of Laird Tech. and is loaned in confidence subject to return upon request and with the understanding that no copies shall be made without the written consent of Laird Tech. All rights to design or invention are reserved.				
REV	DESCRIPTION	DATE	INT					
F	UPDATE LOGO	08/23/16	QIU	PROJECT/PART NUMBER: 28B0339-000		REV F	PART TYPE: FERRITE CORE	DRAWN BY: JRK
E	UPDATE CHAMFER DESIGN & COMPANY LOGO, UPDATE PART WEIGHT	4/17/09	JRK	DATE: 01/13/04	SCALE: 5:1	MATERIAL: FERRITE		
D	UPDATE Z SPEC & COMPANY LOGO	05/22/07	JRK	CAD # 28B0339-000-F	TOOL # B0339			
C	ADD ELECT SPEC & CURVE	02/18/04	JRK					
B	REM CHAMFER ADD RADIUS, UPDATE DETAIL, CHANGE C DIM FROM 10.10 mm	01/14/04	JRK					
A	ORIGINAL DRAFT	01/13/04	JRK					
REV	DESCRIPTION	DATE	INT					